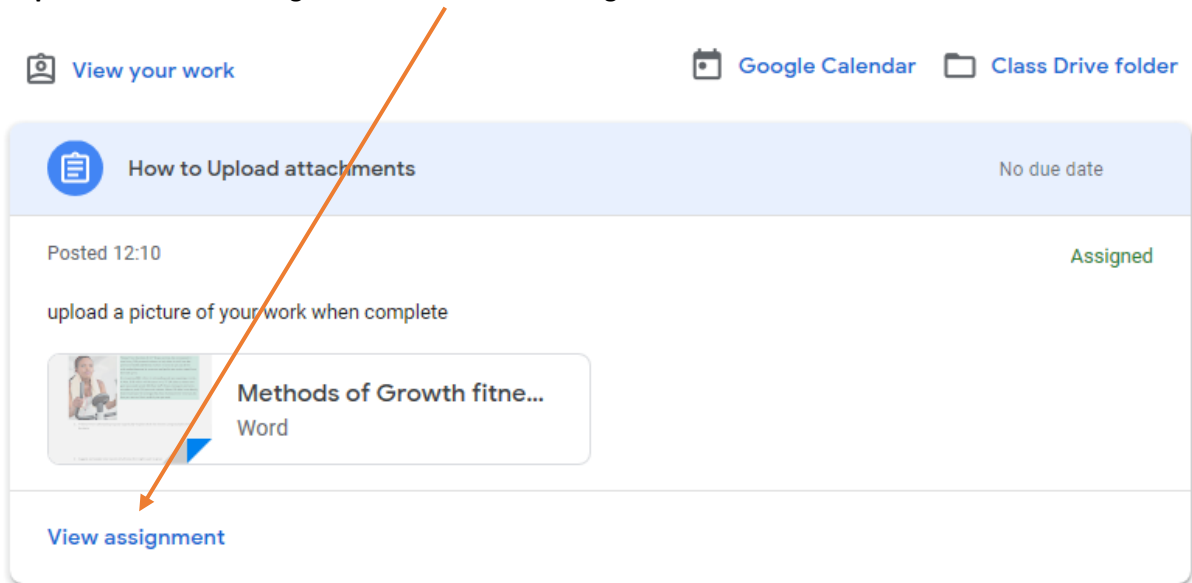
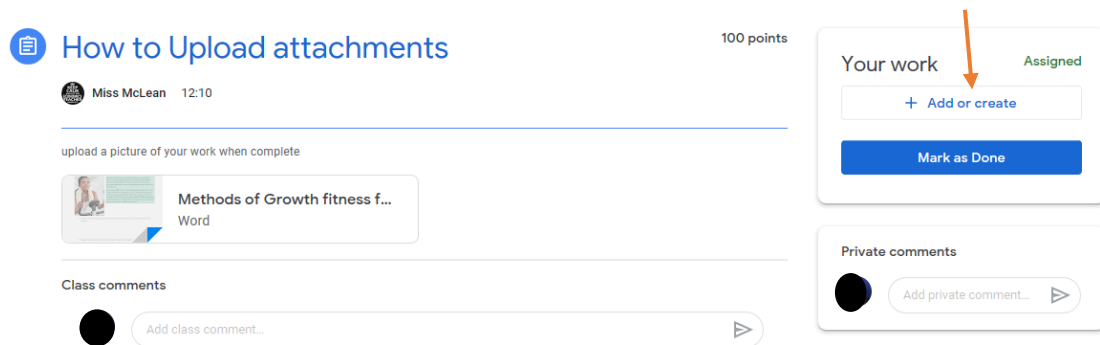


Student Guide to Uploading Work/Evidence to Google classroom

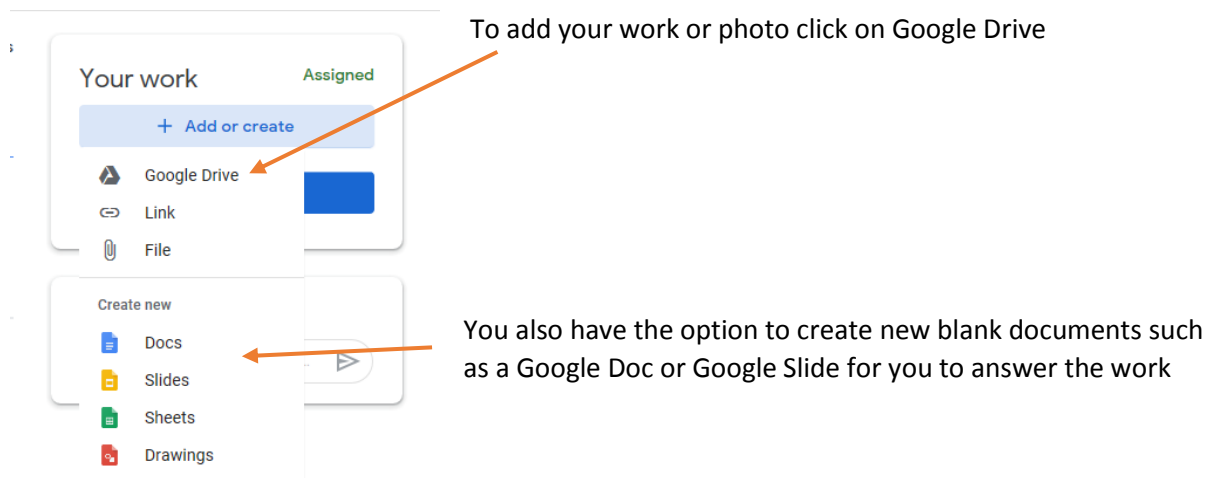
Step 1 – Click on the assignment and click view assignment



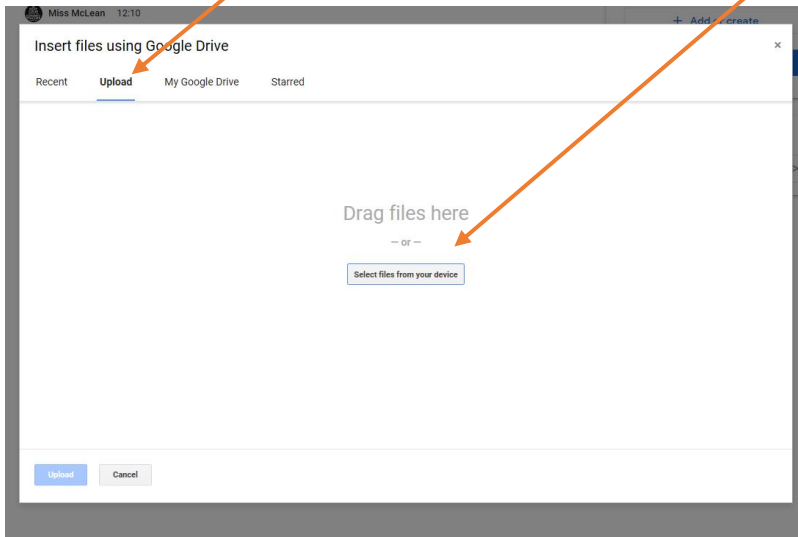
Step 2 – on the right hand side of the screen you will see the option to add or create



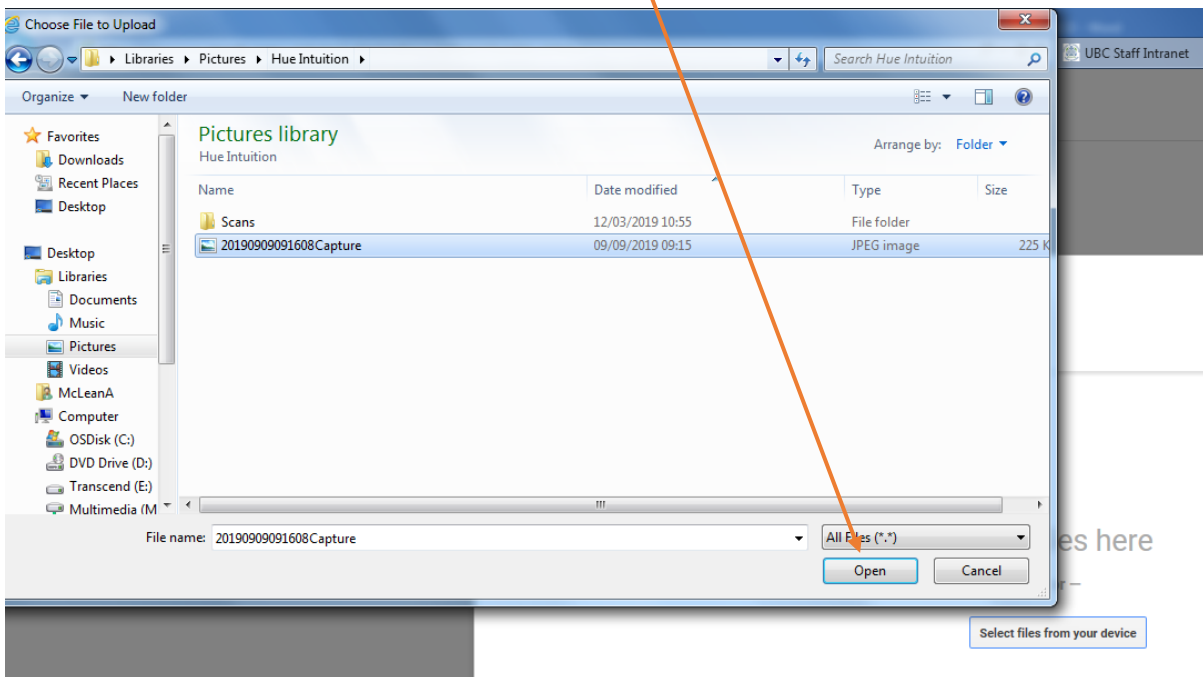
Step 3 -



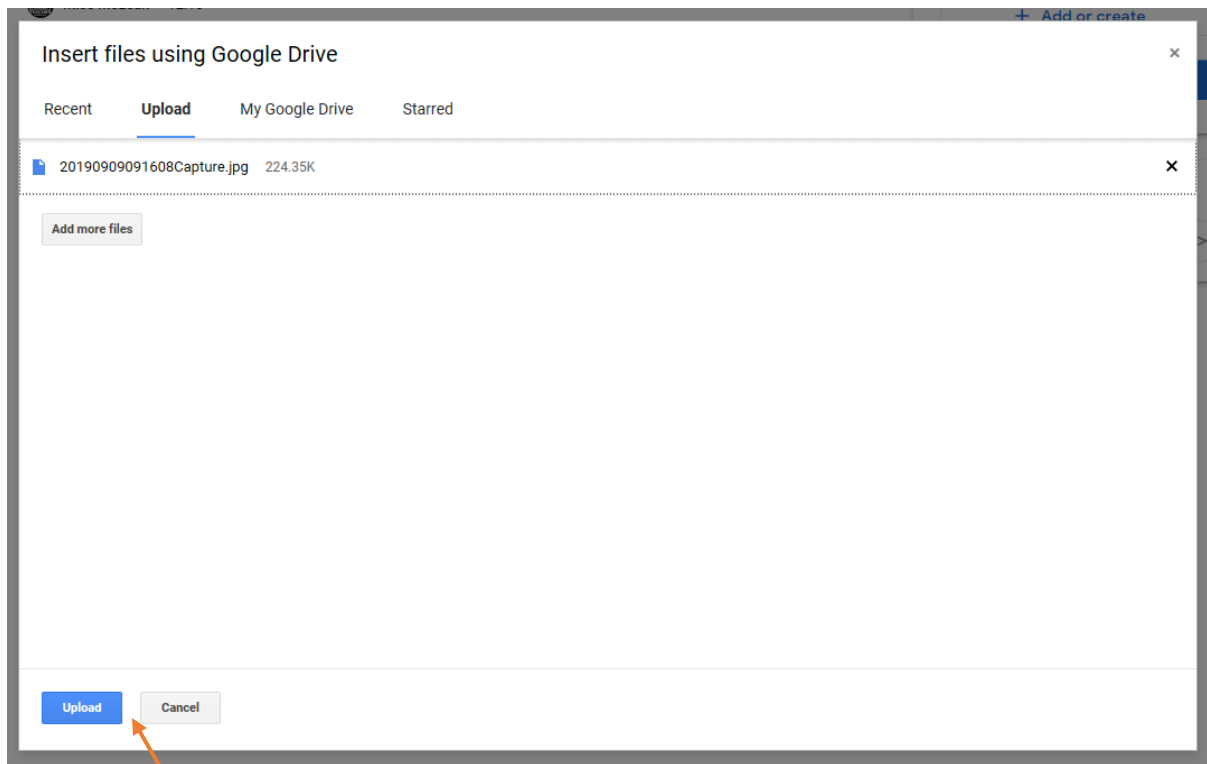
Step 4 – to insert your file click upload from the options and the select files from



Step 5 – Locate the file you want to upload and click open



Step 6 – you will see the file that you want to upload – you can add more files if you need to at this point



Step 7 – When you have uploaded everything you need click upload

Step 8 – You will now see the uploaded work available in your assignment. When complete remember to Hand In

