



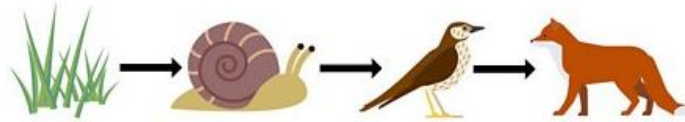
| Keyword | Definition |
|--------------------|--|
| Biomass | The mass of a living organism; contains chemical energy |
| Community | The populations of all the species in a habitat |
| Competition | The struggle between organisms for survival |
| Consumer | An animal that eats another animal |
| Ecosystem | The living and nonliving things in a given area |
| Environment | The surroundings, e.g. air, water, soil where an animal or plant lives |
| Food chain | Part of a food web, starting with a producer and ending with a top predator. |
| Food web | More than one food chain interconnected. |
| Producer | The plant or algae at the start of the food chain that makes its own food |
| Primary consumer | An organism that eats a producer |
| Secondary consumer | An organism that eats a primary consumer |

Further Reading:

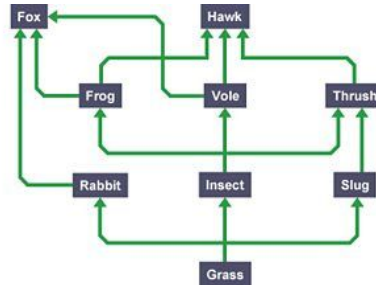
<https://www.bbc.co.uk/bitesize/topics/zxhhvcw/articles/zjh4r2p>

<https://www.bbc.co.uk/bitesize/topics/zhssgk7/articles/z7x6xbk>

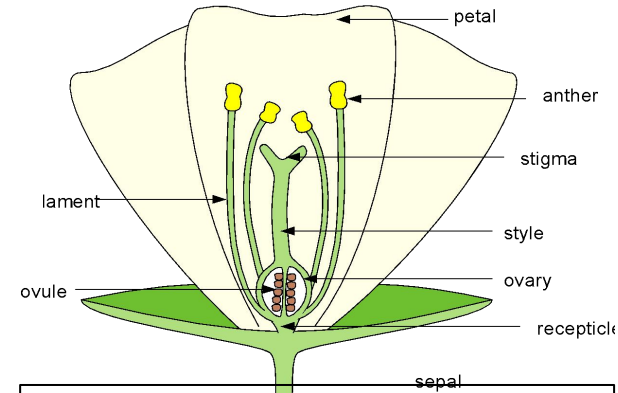
Food Chain



The arrows in a food chain show the direction of energy transfer.



Food webs show how food chains are interconnected. There are many food chains in a food web. Removing one organism can impact on the survival chances of those that feed on them.



Labelled diagram of a flowering plant.



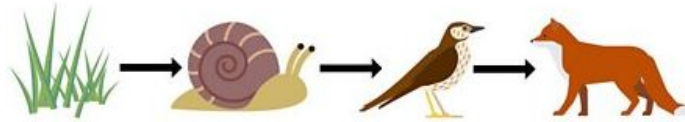
| Keyword | Definition |
|--------------------|--|
| Biomass | The mass of a living organism; contains chemical energy |
| Community | The populations of all the species in a habitat |
| Competition | The struggle between organisms for survival |
| Consumer | An animal that eats another animal |
| Ecosystem | The living and nonliving things in a given area |
| Environment | The surroundings, e.g. air, water, soil where an animal or plant lives |
| Food chain | Part of a food web, starting with a producer and ending with a top predator. |
| Food web | More than one food chain interconnected. |
| Producer | The plant or algae at the start of the food chain that makes its own food |
| Primary consumer | An organism that eats a producer |
| Secondary consumer | An organism that eats a primary consumer |

Further Reading:

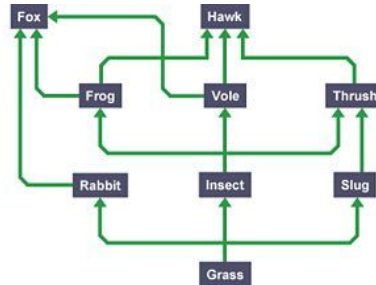
<https://www.bbc.co.uk/bitesize/topics/zxhhvcw/articles/zjh4r2p>

<https://www.bbc.co.uk/bitesize/topics/zhssgk7/articles/z7x6xbk>

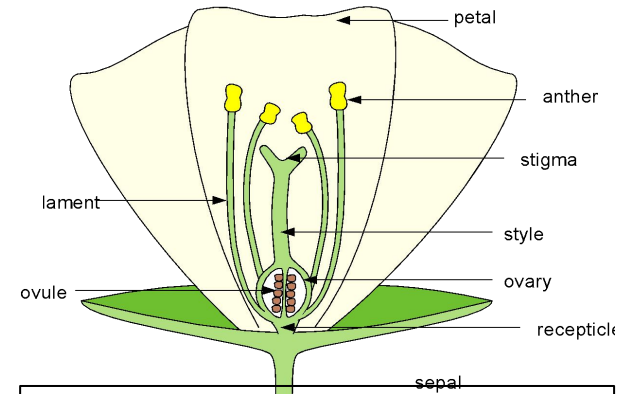
Food Chain



The arrows in a food chain show the direction of energy transfer.



Food webs show how food chains are interconnected. There are many food chains in a food web. Removing one organism can impact on the survival chances of those that feed on them.



Labelled diagram of a flowering plant.