



Parent E-Bulletin – Spring Term Week Commencing 8th January 2024

Dear Parents and Carers,

It has been a pleasure to welcome all the learners back to school this week.

During this week we have met with the parents and carers of Year 11 learners to talk about the ways in which we can support the learners to achieve the very best GCSE results in the summer of this year. I appreciate that not all parents and carers will have been able to attend this session so we have sent to you the PowerPoint and information from the evening. We hope you find this useful.

In each bulletin during this half term I hope to update you on some important areas of the school's work. I hope you will find this useful.

Yours faithfully,

L Cummins
Headteacher

Learner Recognition

We have reviewed and updated our Rewards and Recognition systems and Learner Leadership Opportunities, please see more details below and also on our website:

<https://www.uptonhigh.co.uk/page/?title=Learner+Recognition&pid=729>

<https://www.uptonhigh.co.uk/page/?title=Learner+Leadership&pid=687>

At Upton-by-Chester High School we pride ourselves on recognising and celebrating learners who strive to shape their own future in all aspects of their school life. The Halls system is directly linked to our Learner Recognition and provides all learners with the opportunity to be rewarded for their efforts and achievement across the curriculum and wider areas of school.

The primary aim of the Halls System and the Learner Recognition Pyramid is to encourage all learners to get involved and engage in opportunities at Upton-by-Chester High School and the wider community. Our Halls System is comprised of 5 Halls;

Hall	Characteristic
Maathai	Resilience
Yunus	Diligence
Mendez	Community
Wood	Ambition
Yousafzai	Inclusion

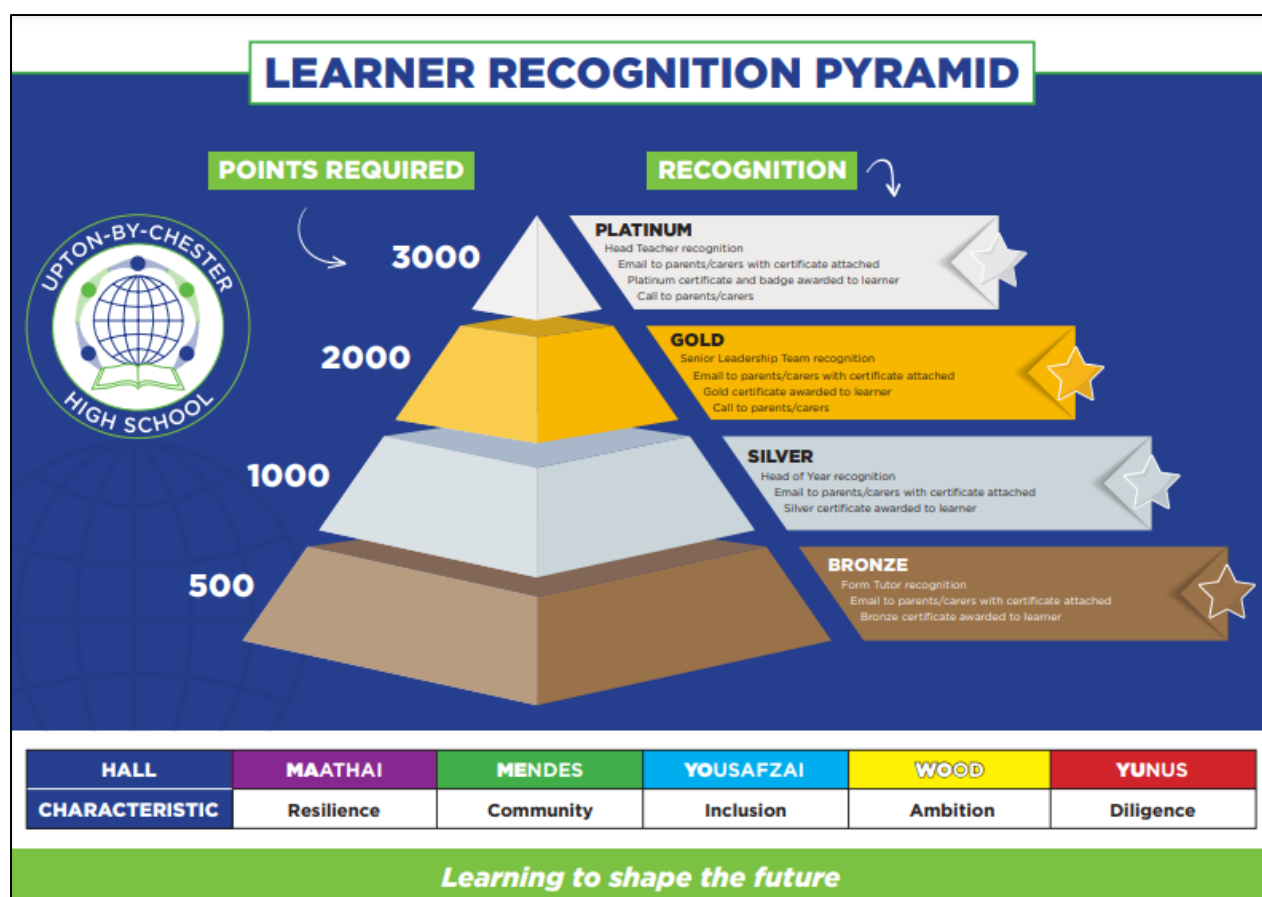
The Learner Recognition Pyramid has been designed with learner input to reflect the ideas and thoughts of learners within our school. Learners can achieve points by attending school every day, being punctual, displaying positive learning behaviours in lessons (ATL 1s and 2s), attending engage@upton activities, achieving a full PRAISE card and being nominated for 'learner of the half term.' These points accumulate throughout the academic year. As learners meet key thresholds, they will be presented with either a Bronze, Silver, Gold or Platinum AWARD.

Recognition Points					
Attendance 100% weekly	No lates weekly	ATL 1 and 2 In lessons	Full PRAISE card	Attending Engage@Upton session	Learner of the Half Term
10 points per week	10 points per week	ATL 1 = 2 points ATL 2 = 1 point	10 points per full card	5 points per session	50 points Per nomination
Maximum per week 10 points	Maximum per week 10 points	Maximum per week 50 points	Maximum per week 50 points	Maximum per week 20 points	Maximum per Half Term 50 points

RAISE PRAISE

In addition, learners are also recognised fortnightly by their form tutors in the RAISE PRAISE session of the PLaN programme.

1. The learners achieving the highest 'total points' for the last 2 weeks (not accumulative) are issued with a certificate and a pack of skittles by their Form Tutor.
2. All the PRAISE cards that are collected during the 2 week period are collated. Form Tutors draw 3 cards and issue skittles.



Head of Year Rewards and Recognition assembly

At the end of each half term all year groups attend a Rewards and Recognition assembly led by their Head of Year and Pastoral Support Manager. In this assembly certificates are issued to learners with 100% attendance for the half term. All the PRAISE cards that have been collected over the half term are posted in to our totalizer.

The Head of Year draws 5 PRAISE cards and the winners receive a bonus prize. The more PRAISE cards in the draw- the higher the learner's chances of winning! These prizes are determined by the School Council and include items like, front of queue passes, amazon vouchers and themed sweet treats.

Halls Assemblies

Once a Half Term, we hold Halls assemblies. These are led by the Assistant Headteacher who oversees each Hall, in conjunction with Miss Noel and the learner leadership teams. Accumulative Halls point totals are shared to encourage 'healthy competition'.

The Sixth Form or Year 11 Hall Leader draws 5 PRAISE cards from the totalizer (relevant Hall) and the winners receive a bonus prize. The more PRAISE cards in the draw- the higher the learner's chances of winning! These prizes are determined by the School Council and include things like, front of queue passes, amazon vouchers and themed sweet treats.

Remote Learning Briefing

Every week a member of the senior leadership team records a Remote Learner Briefing. The content of the briefing focuses on core messaging, opportunities, British Values and recognition. Individual learners and teams are publicly celebrated across the whole school community.

Kind regards,

Mrs K McCarthy
Deputy Headteacher

Careers and Next Steps

Click on the link below to see the latest information

https://docs.google.com/document/d/1ab57VM41x7_yzr0Q19PUj0r4KoWn--X2iSfZR7KI_yc/edit?usp=sharing