



Show My Homework – Satchel One Parent Guide



Complete homework Transparency - means you will see exactly what your child has been set and when it's due.

Contents

Setting Up Your Account.....	2
Key Points:.....	2
Web Version.....	2
On The App	3
Add another Child to your account.....	5
Viewing Homework.....	6
What do the colours in the calendar mean?	6
Why are some tasks missing the 'Submit' option to hand in online?.....	7

Setting Up Your Account

Key Points:

You will need to use either a Web Browser or the Satchel One APP

You will need your parent code (emailed to you) as this will link your account to your child

PARENT/GUARDIAN	OF STUDENT	YEAR	REG.GROUP
P Edwards's Guardian	Phoebe Edwards	Year 12	J

Welcome to Satchel One! Getting started is simple:

1. Go to satchelone.com/signup or open our mobile apps
2. Enter the code provided below
3. Follow the on screen instructions, making sure you use an active email address

Already have an account? Go to Account settings and enter this code into the right field to link to this student.

Parent Code: **6uczgx9jsv3j** This code is valid until 09/07/21. It can be used to create up to 5 parent/guardian accounts.

Creators of
SHOW MY HOMEWORK
satchel:

Web Version


- 1) Go to satchelone.com/signup
- 2) Click the Parent Tab **and click I don't have an account yet**

Login [Forgot password?](#)

Staff Parent Student

I already have an account

I don't have an account yet

I'm not a robot  reCAPTCHA
Privacy - Terms

- i) Enter the School Name (Upton-by-Chester High School)
- ii) Enter your email address
- iii) Enter your Parent Code

- 3) Confirm the learner and school name are correct.
- 4) You will then be able to choose your password

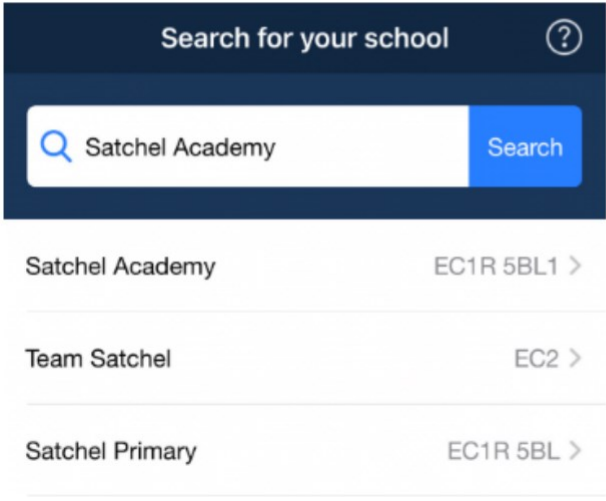
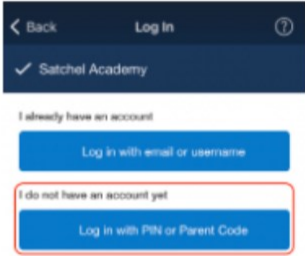
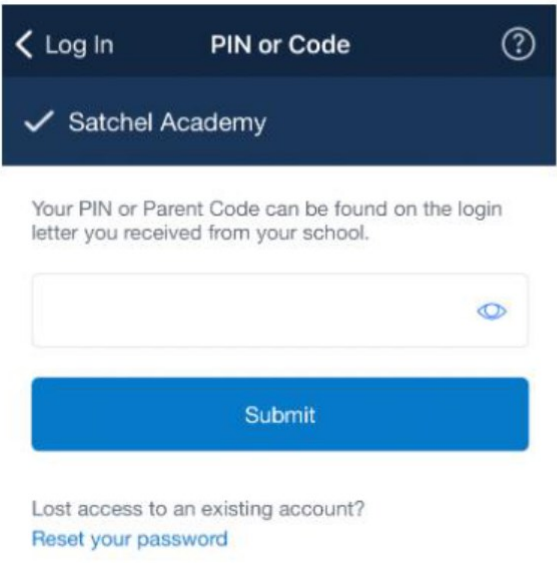
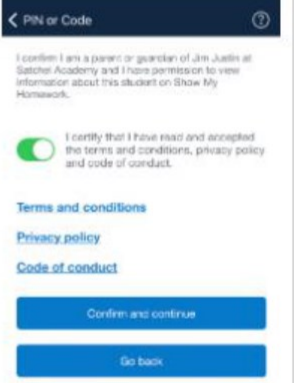
Confirmation

- I confirm I am a parent or guardian of **Grant Fleming** at **Satchel Academy** and I have permission to view information about this student on Show My Homework.
- I certify that I have read and accepted the [terms and conditions](#), [privacy policy](#) and [code of conduct](#).

- 5) You will receive an automated email from noreply@teamsatchel.com asking you to verify your account. For security reasons, you'll have limited access to your account until you complete the email verification process.

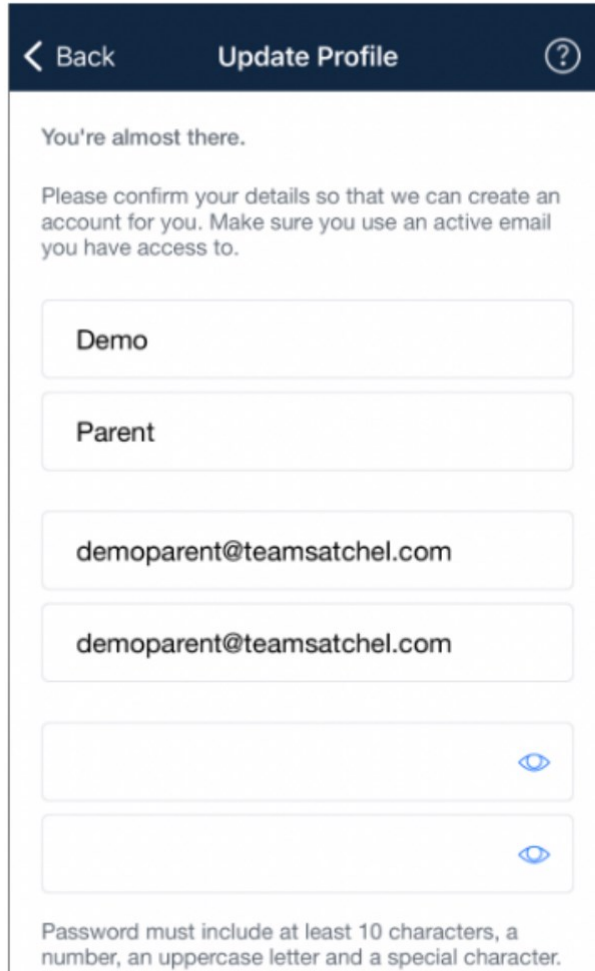
On The App

You will need to download the app from Google Play (Android) or App Store (iOS)

<p>Step 1: Search for and select your child's school (<i>you can search by name or postcode</i>).</p> 	<p>Step 2: Tap 'Log in with a PIN or Parent Code'.</p> 
<p>Step 3: Enter the Parent Code you received from the school or your child.</p> 	<p>Step 4: Confirm that you are linking to the correct child / accept the T&Cs.</p> 

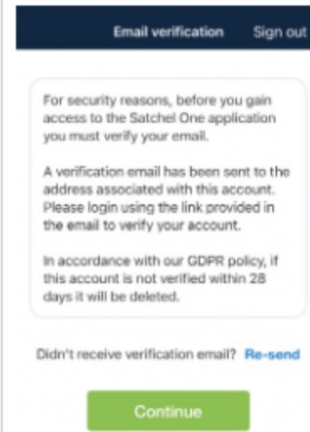
Step 5:

Fill out your personal details and choose a new password (please use an email address you have access to).



Step 6:

Complete the email verification process and log in with your new details

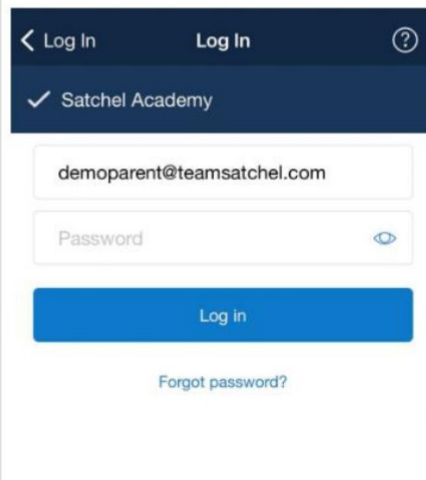


Check your email and follow the link, which will take you to a login page.



Step 7:

Use your newly created login details here to sign into Satchel One and verify your account.



Step 8:

Now you're logged in, you can start to explore your Satchel One account!

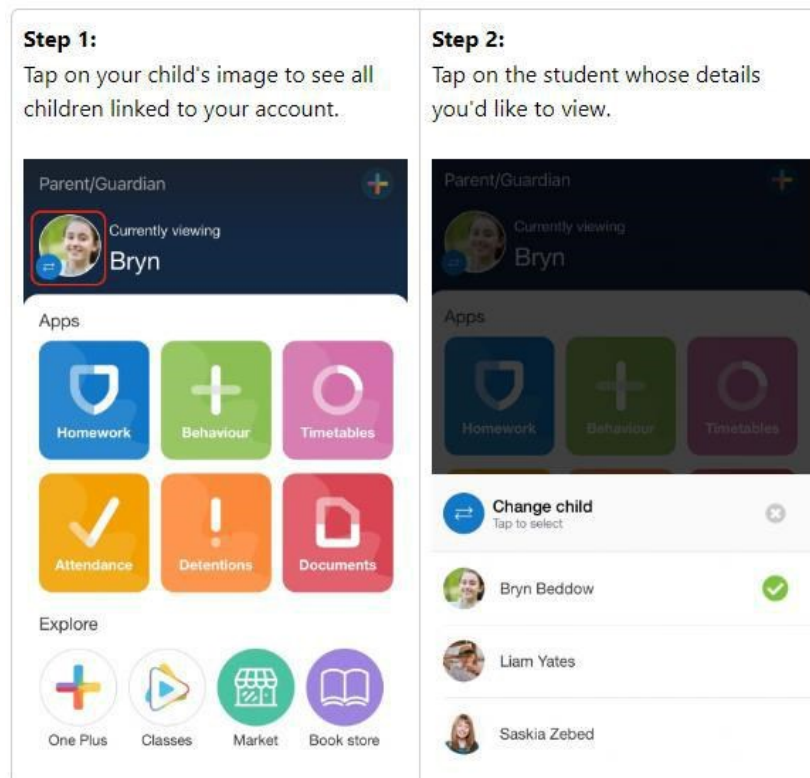


Add another Child to your account

Open the Satchel One app and from the menu, go to *Settings > Student management*.

You will see the learners(s) you are currently linked to, with a + button at the top right of the screen. Tap the + symbol and you'll be prompted to type in a Parent Code that you've received for another child; once linked they'll be visible on your Satchel One account too!

At any time on the app, click the avatar of your child and you will be able to switch between your children quickly and easily.

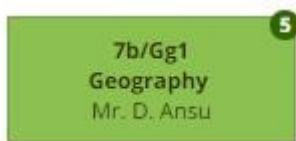


Viewing Homework

When you log into your parental account, if you click on your child's name you will be automatically taken to their To-do-List. This will enable you to see what homework your child has been set and when it is due.

The To-do List is divided into two tabs: **Recent** and **Upcoming**. On the **Recent** page, tasks with the nearest due dates will be displayed. On **Upcoming** page, homework which is due further in the future will appear.

What do the colours in the calendar mean?



On the school homework calendar, you will notice that numbers appear in the top right corner of each homework task.

This simply tells you how many days are left until the task's due date. This helps you gather more information about the task at a moment's glance.



Your child will mostly have the:

Green – which is a homework task

Purple – information about upcoming class tests and assessments

Teal – Spelling test

Orange – an online class quiz

Why are some tasks missing the 'Submit' option to hand in online?

Please note that unless the teacher has selected 'online submission' for a specific homework task, learners will not be able to submit their homework in Satchel one.

If the teacher has asked for the homework to be handed in during class or on a different platform, the submit option will not be available. You can find how your child is meant to submit their homework in the description box available in every homework task

Other information

- This homework will take approximately 1 minute
- Mr E. Manister does not require you to submit anything for this task

Please note we do not use the mark book facility on Show My Homework. If your child fails to complete and hand in homework on time a '?' will be added to EduLink.

